

D. 100 Property Transfer Tax

Presentation to the House Committee on
Government Operations



Katie Buckley, Chris Cochran, John Adams
Agency of Commerce and Community Development

February 28, 20

If you fail to plan, you are planning to fail.



Why Plan?

No. 107.—AN ACT TO PROVIDE FOR PLANNING COMMISSIONS IN CITIES, TOWNS AND VILLAGES.

(H. 111)

It is hereby enacted by the General Assembly of the State of Vermont:

SECTION 1. *Creation and membership.* Any city, town or incorporated village is hereby authorized to create a

94

PUBLIC ACTS

[No. 107

commission to be known as the municipal planning commission, by resolution of the voters at the annual city, town or village meeting or at a special meeting duly warned for the purpose.

When such a commission is created, it shall consist of five persons. The mayor, chairman of the board of selectmen, president of the village or chairman of the board of village trustees, as the case may be, shall be ex officio one of the members of the commission during his term of office. The other four commissioners shall be appointed in cities, by the mayor; in towns, by the board of selectmen; and in villages, by the village trustees. Said appointed commissioners shall be appointed for the term of four years, except that when the commission is created, one commissioner shall be appointed for a term of four years, one for a term of three years, one for a term of two years, and one for a term of one year. Any appointment to fill a vacancy shall be for the unexpired term.

SEC. 2. *Expenses; assistance; reports.* The body creating a municipal planning commission shall, by ordinance or resolution, provide what compensation, if any, each of such commissioners shall receive for his services. The commission shall have authority to employ such expert and clerical assistance as may be necessary to accomplish the purposes for which it was created, provided that the total cost for the same shall not exceed the appropriation that may be made by the city, town or incorporated village for the use of said commission. Each city town or incorporated village is hereby authorized to make such appropriations as it may see fit for such compensation and assistance, such appropriation to be made by those officers or bodies in such city, town or incorporated village having charge of the appropriation of the public funds.

The commission shall make an annual report to the body which created it.

SEC. 3. *Powers.* The commission shall have power ~~except as otherwise provided by law:~~

1. To prepare or acquire a comprehensive plan for the future development of the city, town or incorporated village which shall be based primarily upon convenience, utility and public welfare.

When said plan shall be adopted by the voters of a city, town or incorporated village at the annual city, town or village meeting or at a special meeting duly warned for the purpose, it shall be known and designated as the official municipal plan; and no highway, street, bridge, viaduct, park, playground, square, statue, monument, street fixture, park fixture, sewerage system, water system, public building, or any other public improvement proposed to be erected

No. 108]

PUBLIC ACTS

95

or constructed wholly or in part from public funds and not included in said plan as adopted by the municipality, shall be authorized to be erected or constructed within the municipality until the location of the same has been submitted to the planning commission for its approval or disapproval.

Said plan shall be deemed to be approved by the commission if reasons for disapproval are not transmitted to the city council, selectmen, or village trustees as the case may be, within thirty days after they are received by the commission. In case of disapproval, the commission shall transmit its reasons for disapproval in writing to the city council, selectmen or village trustees who may, by a majority vote, overrule such disapproval.

2. From time to time to prepare and recommend to the proper officers of the municipality such amendments to the official municipal plan as in its judgment shall be necessary or desirable.

3. To recommend to the governing authority of the municipality such ordinances, resolutions or bylaws for the division of the municipality into districts or zones based upon the height, ground area and use of buildings and structures as may be consistent with existing law.

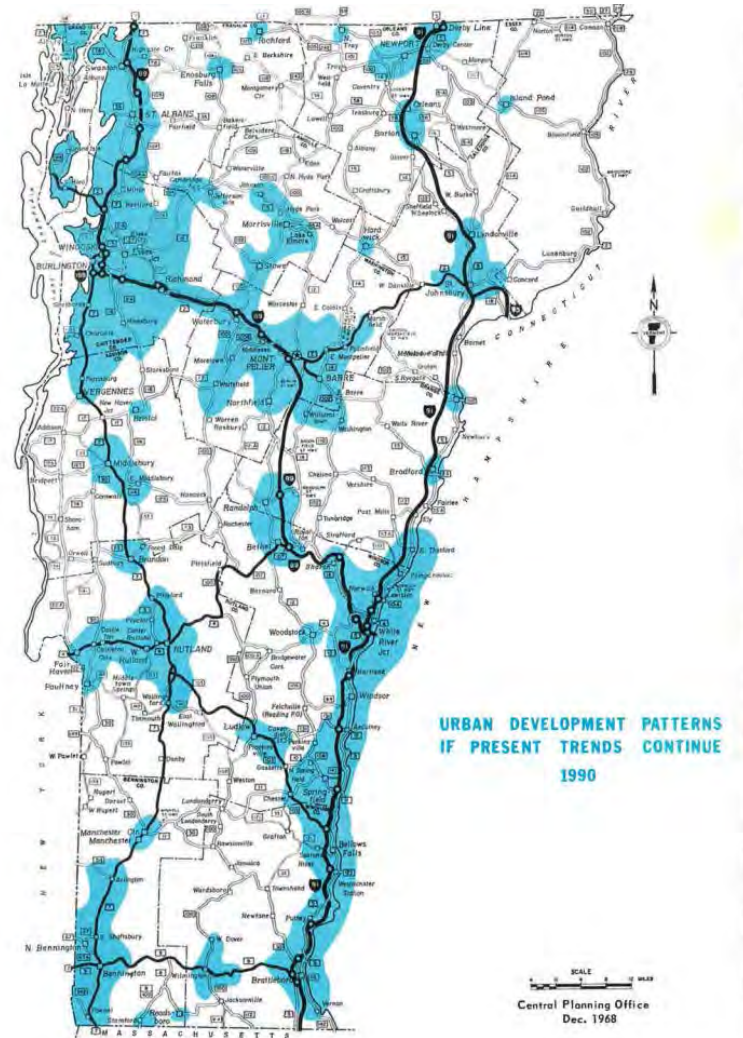
SEC. 4. This act shall take effect from its passage.

Approved February 22, 1921.

Planning and Development Act (1967) and Act 200 (1988)

“To plan development so as to maintain the historic settlement pattern of compact village and urban centers separated by rural countryside.”

24 V.S.A. Chapter 117
§ 4302. Purpose; goals



- (1) To establish a coordinated, comprehensive planning process and policy framework to guide decisions by municipalities, regional planning commissions, and state agencies.
- (2) To encourage citizen participation at all levels of the planning process, and to assure that decisions shall be made at the most local level possible commensurate with their impact.
- (3) To consider the use of resources and the consequences of growth and development for the region and the state, as well as the community in which it takes place.
- (4) To encourage and assist municipalities to work creatively together to develop and implement plans

24 V.S.A. Chapter 117
§ 4302. Purpose; goals

Planning and Development Act (1967) and Act 200 (1988)

“When it comes to planning, if you’re not doing it with people - they think you are doing it to them.”

Roger Millar, AICP
National Complete Streets Coalition



State Planning Goals

The state has 14 specific planning goals.



Regional Plans

Regional plans must be consistent with the state planning goals.



Municipal Plans

In order to have a regionally approved plan, municipal plans must be compatible with the regional plan and consistent with the state planning goals.



Regional Planning Commissions

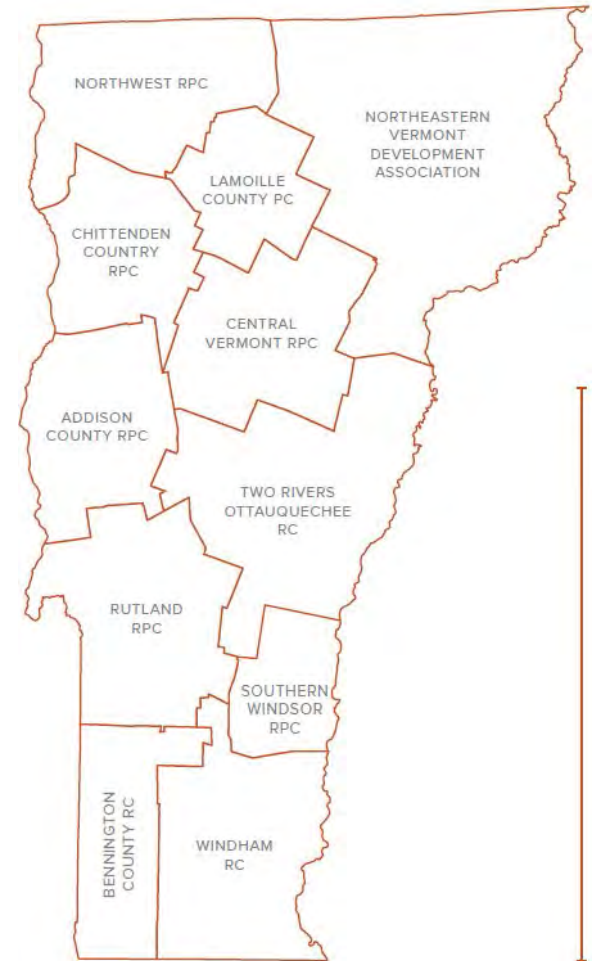
RPCs *shall* adopt regional plans.

12 Elements

8 Year Plans

Shall be consistent with state goals

Regulatory authority (Act 250)



12 Elements

1. Statement of objectives
2. Land use plan
3. Transportation plan
4. Utility and facility plan
5. Policies on historic and natural resources
6. Educational facilities plan
7. Implementation plan
8. Relation to other regions
9. Energy plan
10. Housing plan
11. Economic development plan (added 2011)
12. Flood resilience plan (added 2013)



East Central Vermont:
what we want

Windsor, Vermont

Randolph, Vermont

EAST CENTRAL VERMONT
what we want
A VIBRANT, HEALTHY, AND EQUITABLE REGION

The collage features four distinct images. The top-left image shows a man in a kitchen, wearing glasses and a blue shirt, focused on a large white bowl. The top-right image depicts the exterior of a brick building at night, with a sign that reads 'ONE MAIN TAP & GERY' and a person on a ladder working on the entrance. The bottom-left image is a scenic view of a green field with a river and trees in the background. The bottom-right image is a logo for 'EAST CENTRAL VERMONT' featuring a red maple leaf and the text 'what we want' and 'A VIBRANT, HEALTHY, AND EQUITABLE REGION'.

VOLUNTEERS

5000



\$90

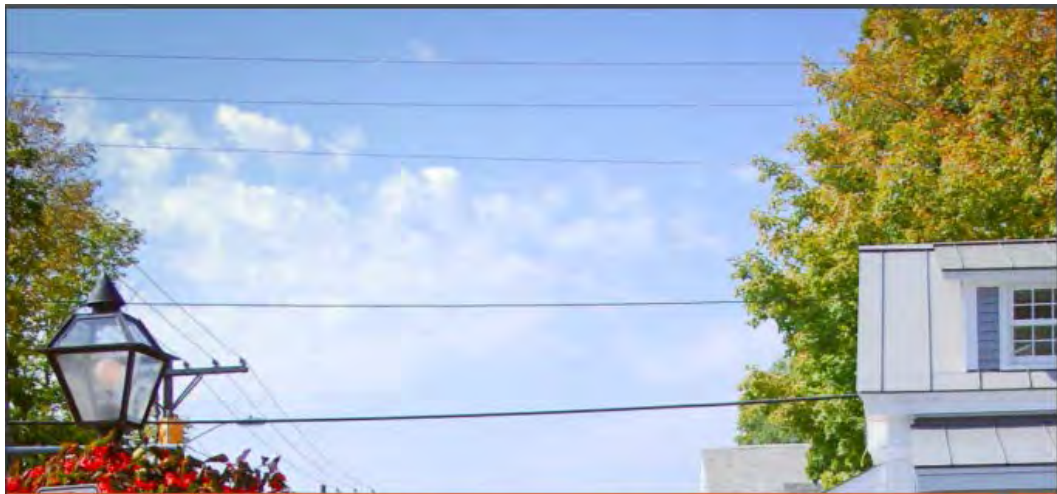
Billion

Property Value

Population



Median population: 1,222



The Municipal Plan

State Planning Manual - Module 1
February 2017



Regional Planning Commissions

 176

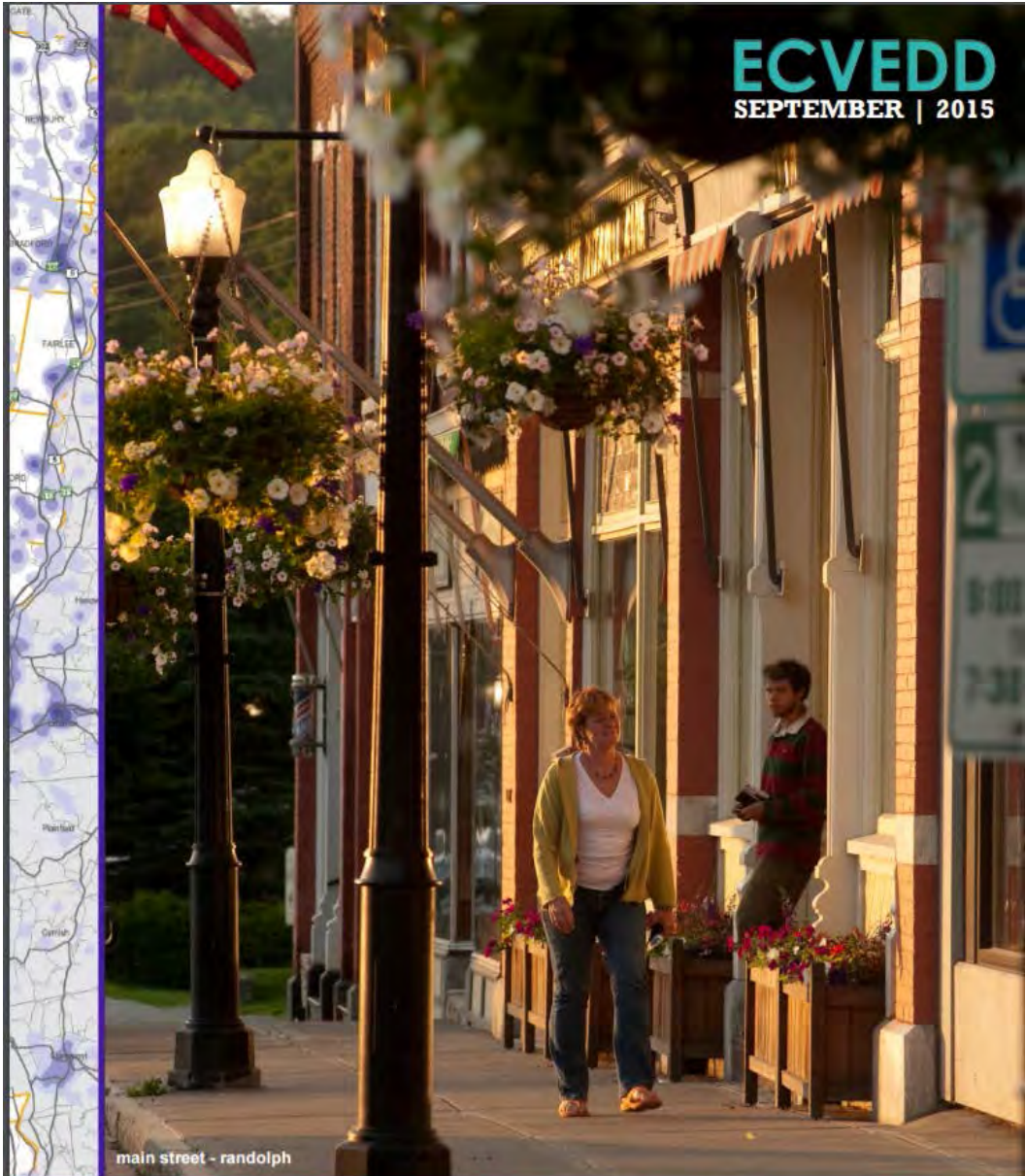
 97

RPCs TRAINED 176 INDIVIDUALS FROM
97 MUNICIPALITIES ON ESSENTIALS
OF LAND USE REGULATION AND
INTERMUNICIPAL SERVICES.

NEARLY EVERY MUNICIPALITY IN
THE STATE RECEIVED TECHNICAL
ASSISTANCE FROM THEIR REGIONAL
PLANNING COMMISSION.



ECVEDD
SEPTEMBER | 2015



main street - randolph

**2015-2020 Comprehensive Economic Development Strategy
East Central Vermont Economic Development District**



Ferrisburg

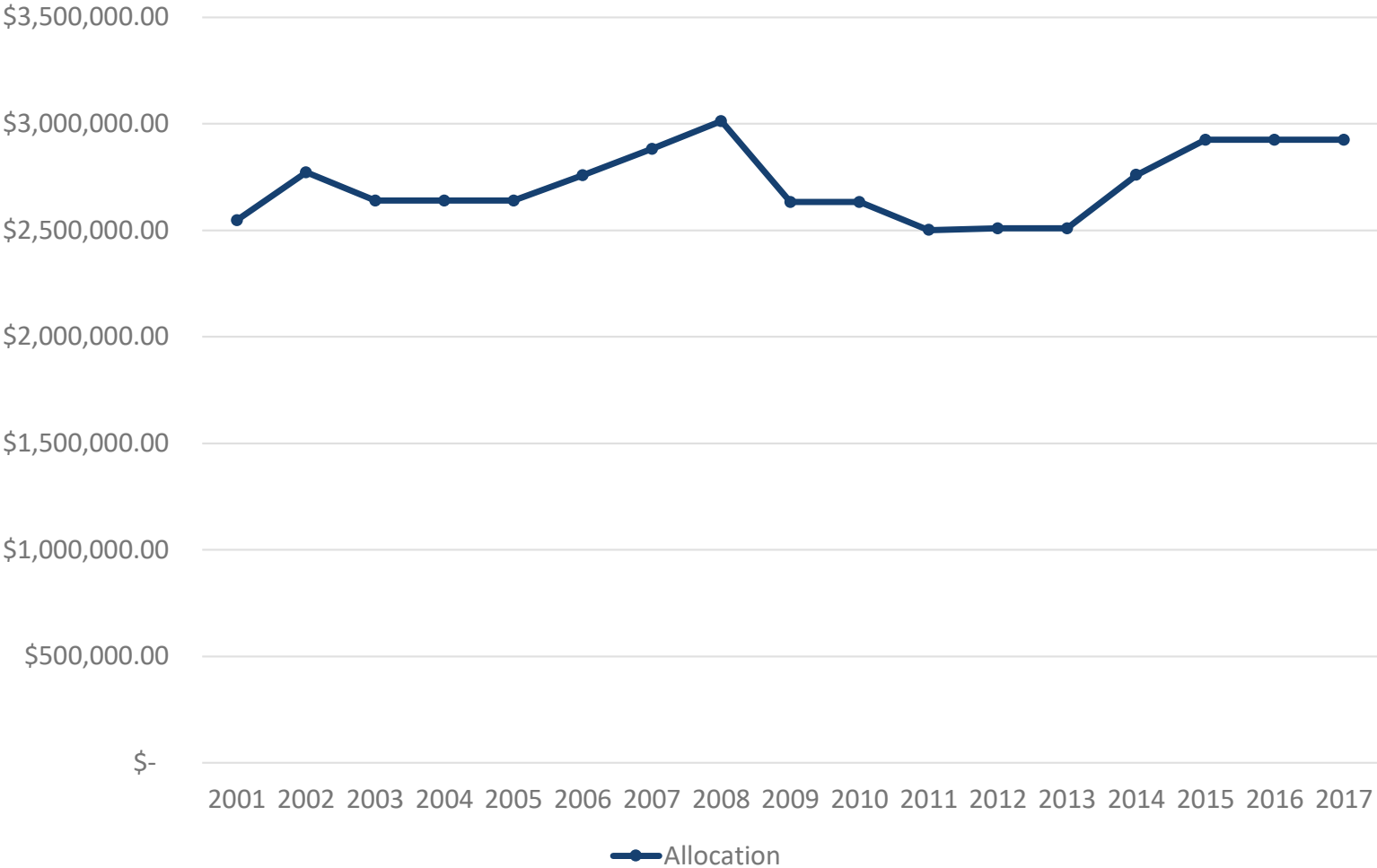
Trying Hard Is Not Good Enough



*How To Produce Measurable Improvements
For Customers and Communities*

Mark Friedman

Regional Planning Commissions (RPCs)



But Wait...

**THERE'S
MORE!!!**



2015 TRANSPORTATION PLANNING INITIATIVE BY THE NUMBERS

1

TPI OBJECTIVE 1:
COOPERATION &
COORDINATION
BETWEEN VTRANS,
RPCS, AND
MUNICIPALITIES

87

TAC MEETINGS
(47% MUNICIPAL
PARTICIPATION)

484

COUNTS
TRAFFIC, BIKE/PEDESTRIAN,
PARK AND RIDE, ETC.

161

OTHER MEETINGS
SUCH AS ROAD FOREMAN
CODES AND STANDARDS,
OR SAFETY FORUMS, ETC.

2

TPI OBJECTIVE 2:
CONFORMANCE
WITH ACT 200 &
FACILITATION OF
DECENTRALIZED
DECISION-MAKING

11

REGION PLANS
ALL ELEVEN RPCS
HAVE INCORPORATED
REGIONAL TRANS. PLANS

44

ACT 250 HEARINGS
WITH TRANSPORTATION
COMMENTS

28

ACCCELERATED
BRIDGE PROJECT
MEETINGS

3

TPI OBJECTIVE 3:
PROVISION OF
TRANSPORTATION
PLANNING
SUPPORT TO
MUNICIPALITIES

37%

OF TPI BUDGET
SPENT ON LOCAL
TECHNICAL ASSISTANCE

49

SCOPING STUDIES
COMPLETED

76

INVENTORIES
BRIDGES, CULVERTS,
SIDEWALKS, AND SIGNS



IRENE DAMAGE
SITE AFTER CDBG BUYOUT



VAPDA

VERMONT ASSOCIATION OF PLANNING & DEVELOPMENT AGENCIES



ANNUAL REPORT

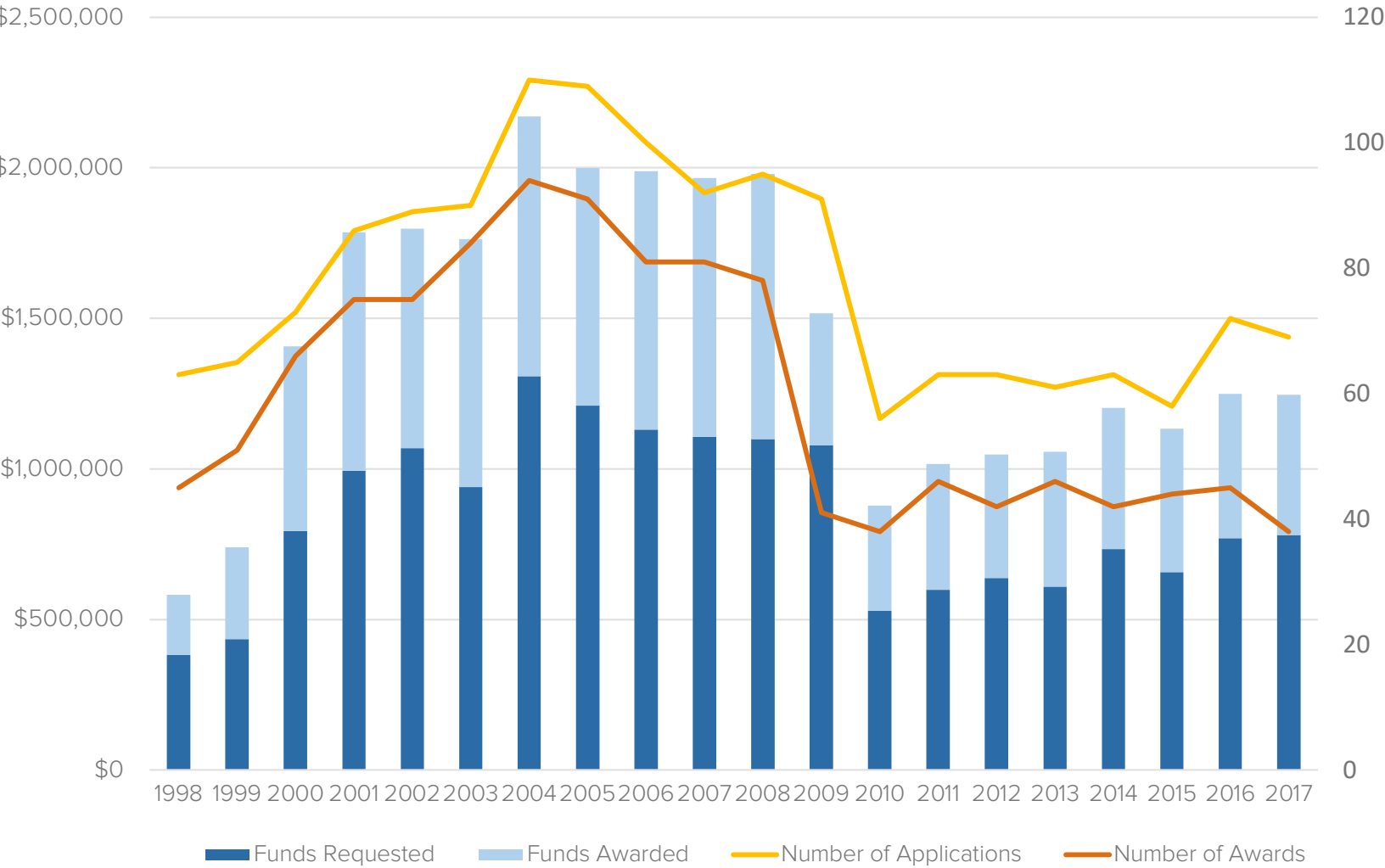
FISCAL YEAR 2016

ADDISON COUNTY REGIONAL PLANNING COMMISSION
BENNINGTON COUNTY REGIONAL COMMISSION
CENTRAL VERMONT REGIONAL PLANNING COMMISSION
CHITTENDEN COUNTY REGIONAL PLANNING COMMISSION
LAMOILLE COUNTY PLANNING COMMISSION
RUTLAND REGIONAL PLANNING COMMISSION
NORTHEASTERN VERMONT DEVELOPMENT ASSOCIATION
NORTHWEST REGIONAL PLANNING COMMISSION
TWO RIVERS-OTTAUQUECHEE REGIONAL COMMISSION
SOUTHERN WINDSOR COUNTY REGIONAL PLANNING COMMISSION
WINDHAM REGIONAL COMMISSION

Municipal Planning Grants

Median population: 1,222

Municipal Planning Grants (MPG) Award History



Municipal Planning Grants

2017

Program Overview

Awarded annually and administered by the Department of Housing and Community Development (DHCD), the program works to strengthen Vermont communities. Since 1998, the Municipal Planning Grant Program has provided over \$11 million to 234 cities and towns across Vermont to help breathe new life into communities, plan for future growth and development, and improve the quality of life.

This year's Municipal Planning Grants, range from \$3,159 to \$20,000 with total requests exceeding \$780,000. Competitively awarded, 69 total applications were reviewed with 38 recipients selected. Projects range from a proposal to redevelop an older shopping plaza to serve the needs of West Rutland residents and visitors to strengthening local regulations to better serve the farm and forest economies in Berkshire, a rural town on the Canadian border.

FY 2017 Grant Recipients

Barnet, Bennington, Benson, Berkshire, Bradford, Brattleboro, Cabot, Concord, Cornwall, Fairlee, Hardwick, Highgate, Irasburg, Jamaica, Jeffersonville Village, Manchester, Milton, Peacham, Putney, Randolph, Rutland City, Ryegate, St. Albans City, Springfield, Starksboro, Tunbridge, Vernon, Wallingford, Warren, Waterbury, Waterford, Waterville, Weathersfield, West Fairlee, West Rutland, Windsor, Winooski, and Wolcott.

By the Numbers [2011 - 2016]

\$4.1 M

in grant
funds requested

\$366,813

in local
match funds

253

municipal planning
grants awarded

\$2.7 M

in grant
funds awarded

19,578

people engaged
in the planning projects

99%

of survey respondents say
MPGs are important to achieve
planning goals



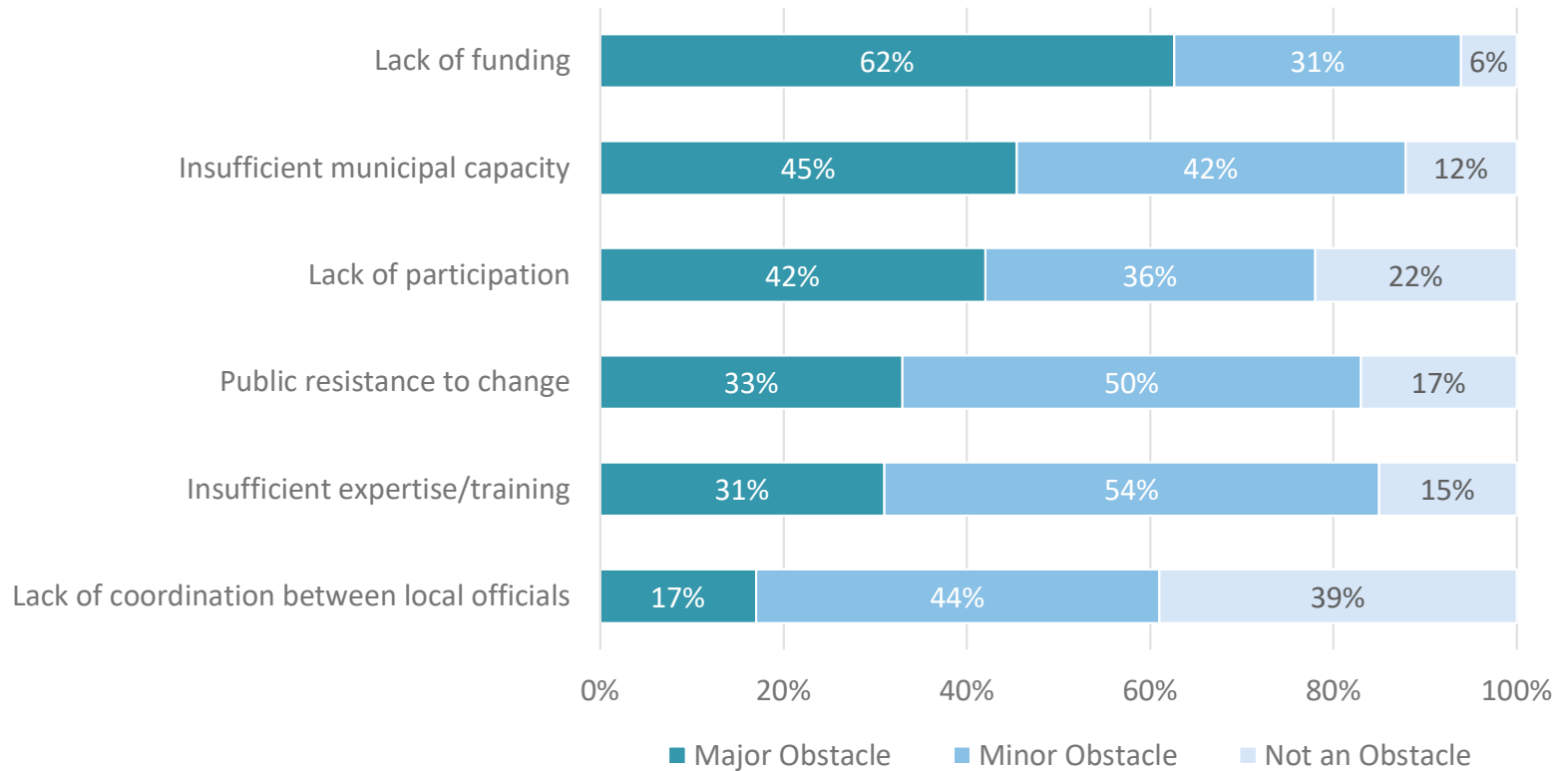
“Vermont’s Municipal Planning Grants make possible incremental steps toward healthy, safe and vital communities throughout Vermont. For Bennington, the grants have and continue to result in tangible and significant improvements to the community, particularly in our downtown. As our communities succeed, Vermont’s reputation as a great place to live and work is made all the more real.”

Michael McDonough, President of the Better Bennington Corporation



Q13. Please tell us about obstacles to meeting your planning priorities?

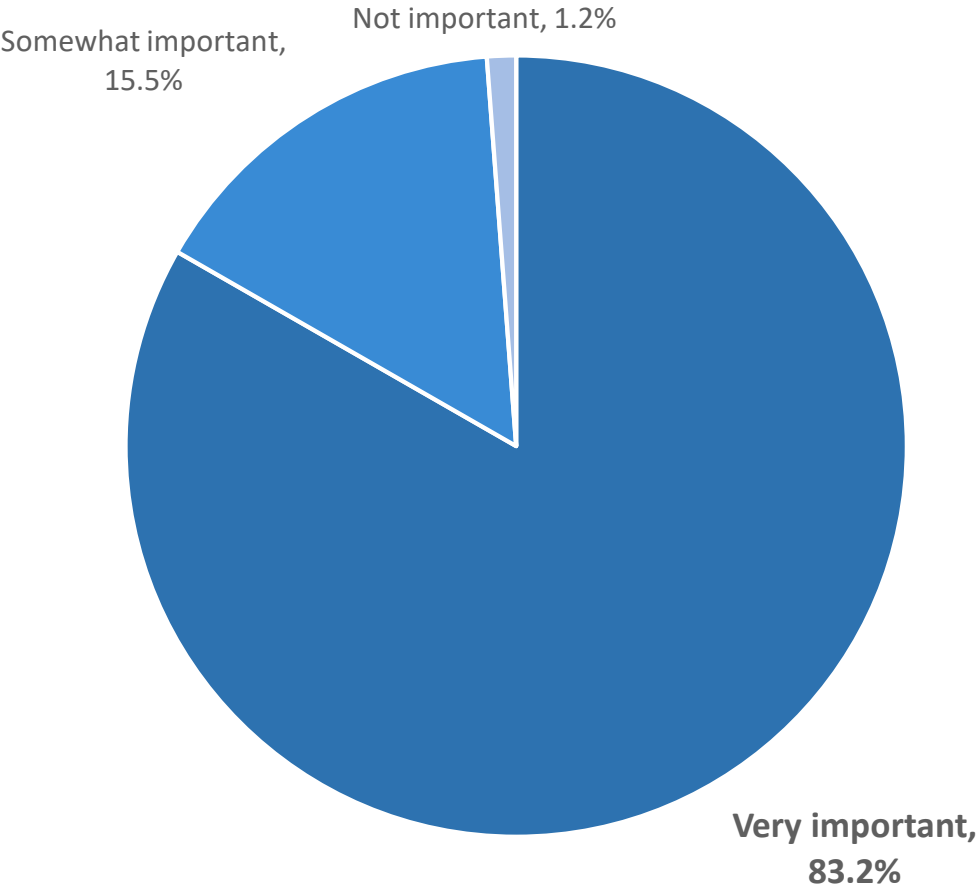
N. 160



Lack of funding and insufficient municipal capacity.

Q14. How important are municipal planning grants in helping your community or communities achieve their planning priorities?

N. 161



Respondents indicated that the program makes a difference

Municipal Planning Grants

“These grants and the Regional Planning Commission have enabled us to meet state requirements that would have been very difficult to achieve without them.”

“Staff have been wonderful, but the Intelligrants System created more headaches than it should!”

“Thanks for running this excellent program. Small communities need all the help we can get!”

“Please restore the MPG funding to full amounts. It also makes sense to require a match for all grants and have larger grant amounts.”

“Funds to promote community planning and sustainable development (including local matching funds) are crucial to Vermont’s future.”

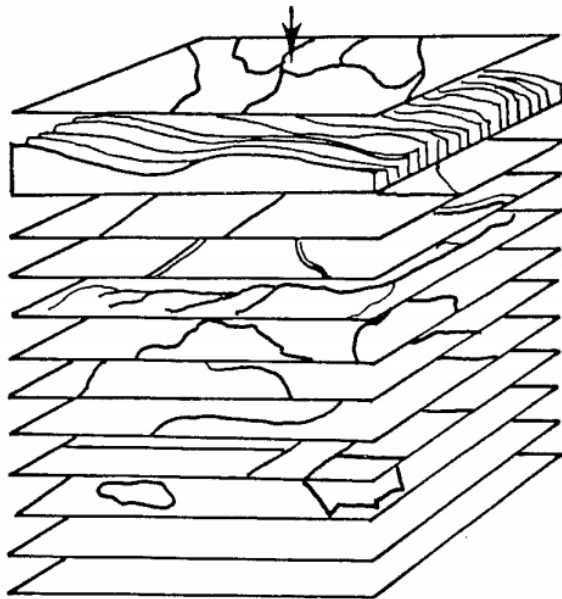
“Lets concentrate on plan implementation for a while.”

VCGI



VERMONT CENTER FOR GEOGRAPHIC INFORMATION

A GEOGRAPHIC INFORMATION SYSTEM for VERMONT



SOILS
TOPOGRAPHY
slope, aspect, elevation
POLITICAL BOUNDARIES
TRANSPORTATION
STREAM COURSES, WATERSHEDS
LAND COVER/USE
GROUND WATER
GEOLOGY
SOCIO - ECONOMIC FACTORS
HISTORICAL/ARCHAEOLOGY
FUTURE EXPANSION
FUTURE EXPANSION

“A system designed to capture, store, manipulate, analyze, manage, and present spatial or geographical data.”

The Creation of the Vermont State Data Base: A Program of Work (1983)

1968
Vermont Mapping
Program (Tax Dept)

1974
Orthophotographs

1980
GIS Computer
At UVM

1989
Office of GIS
(Agency of Admin)

1992
Vermont Center for
Geographic Information,
Inc.
(17mb of data!)

1998
1st VCGI Website

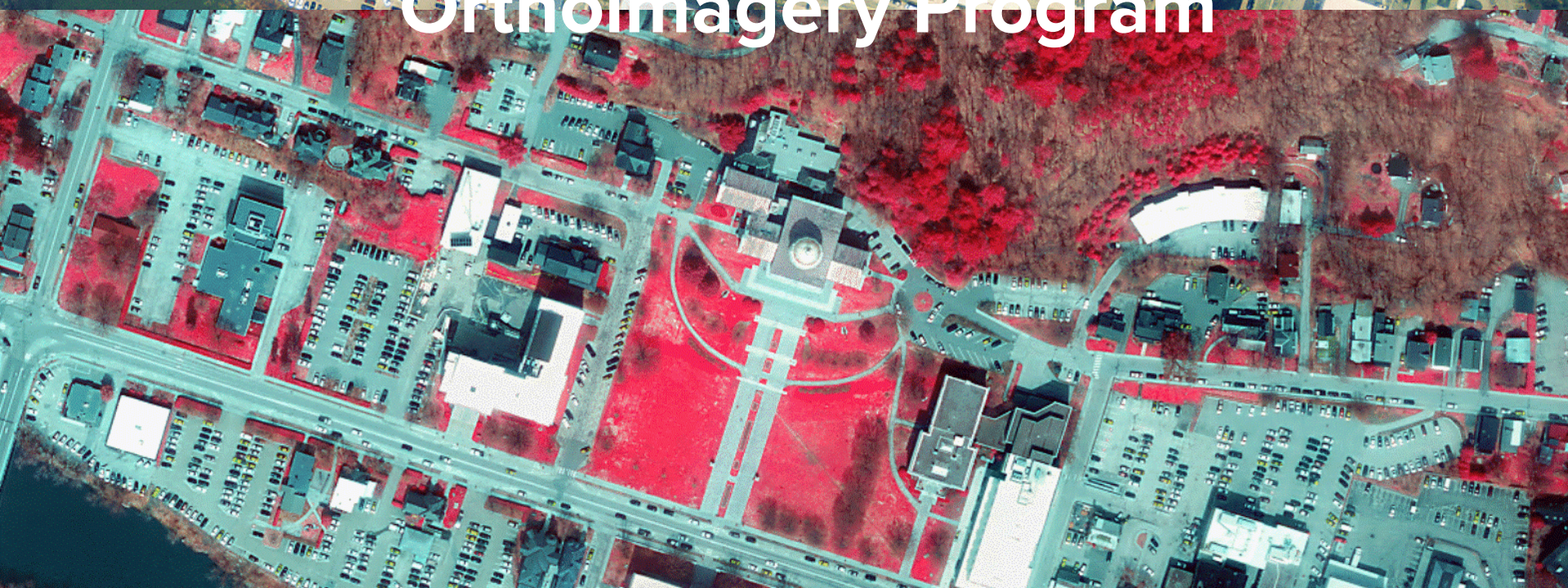
2002
VCGI move from
UVM to Waterbury

2015
VCGI becomes
Part of ACCD





Orthoimagery Program



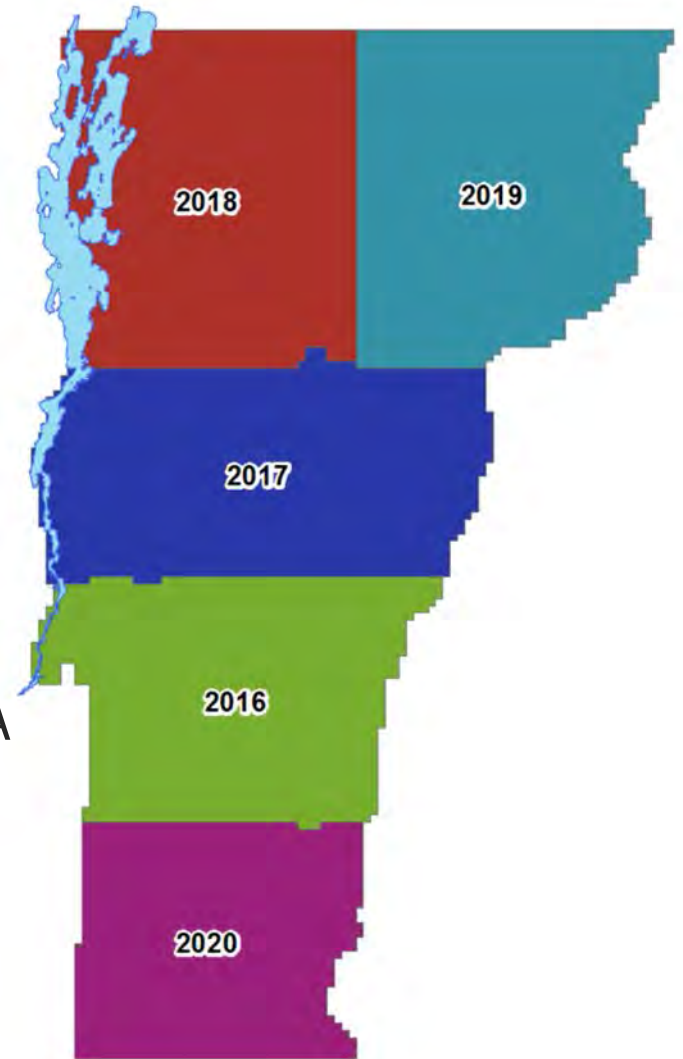
Orthophoto Program

OVERVIEW

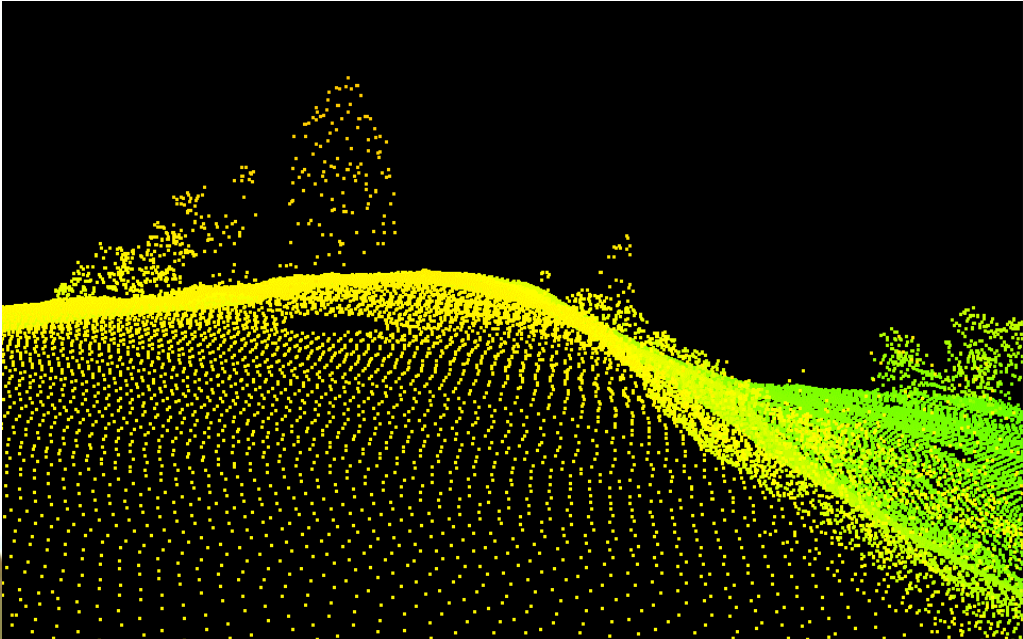
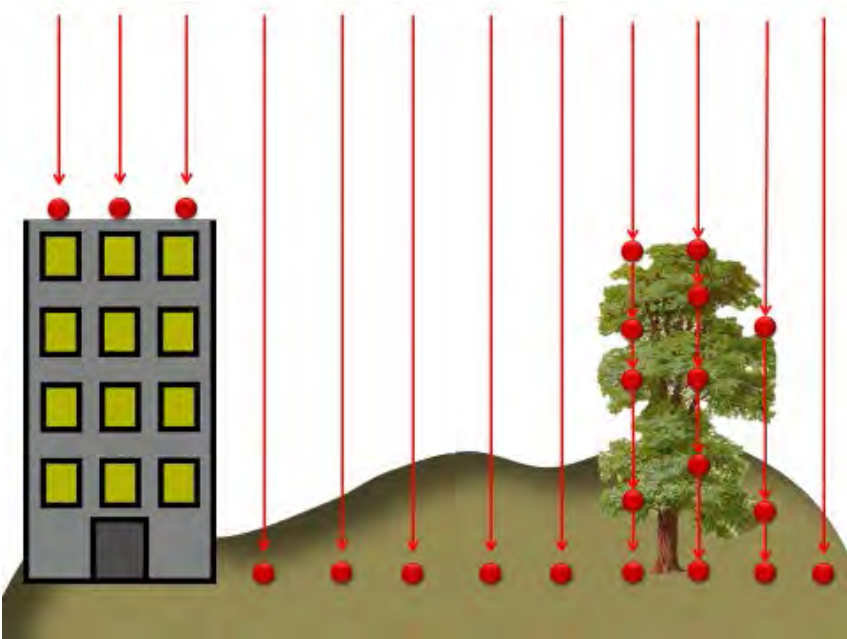
- Collected in sections with 5 year cycle
- Leaf-Off, No Snow, No Clouds, Infrared

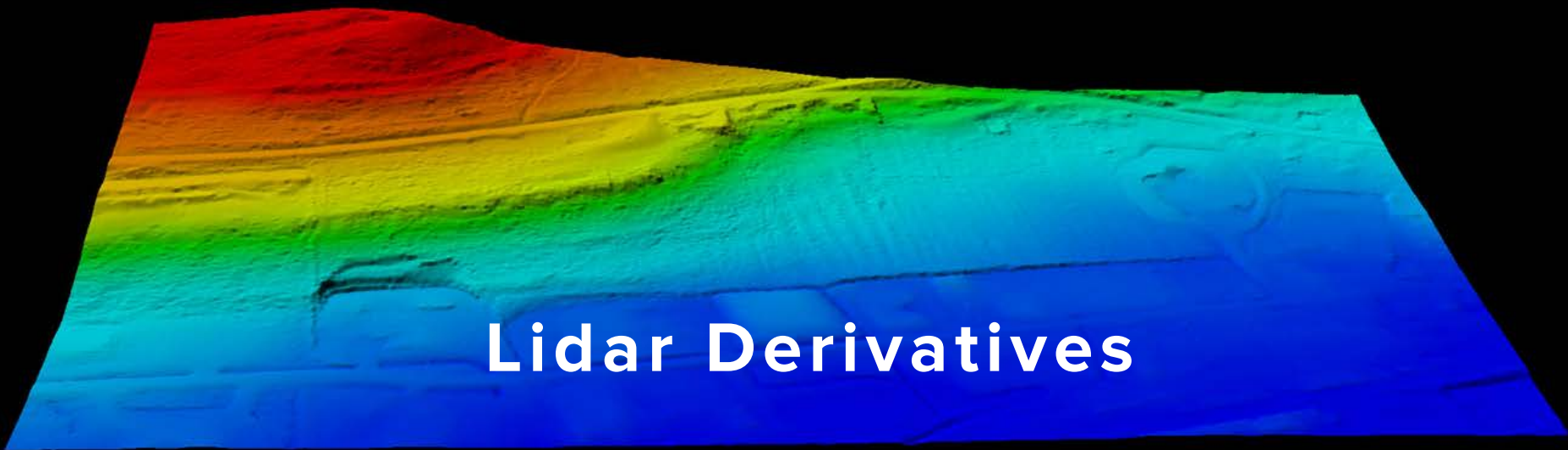
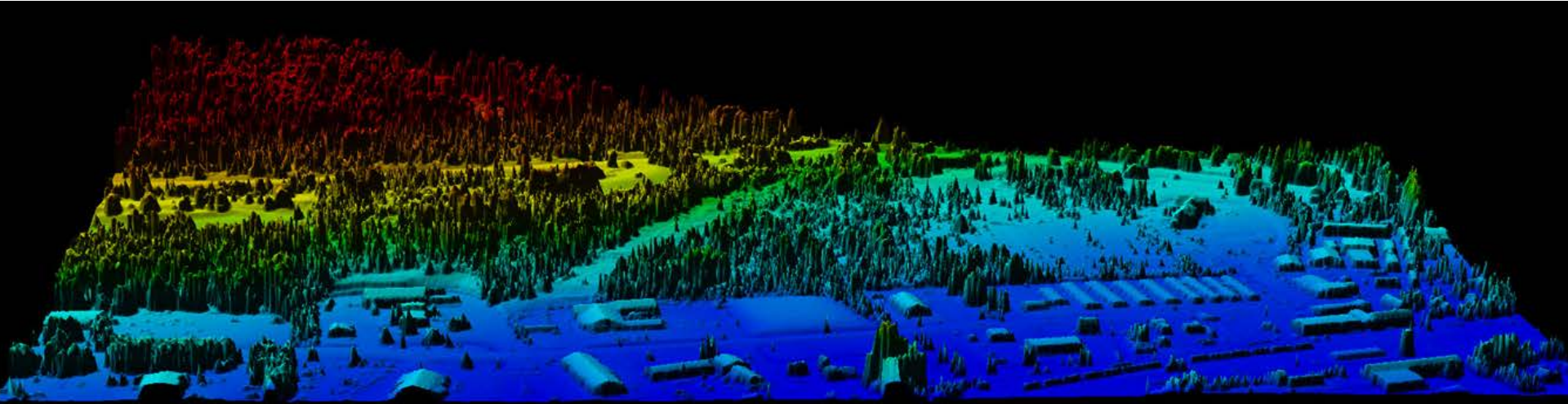
2016-2020 ACQUISITION PLAN

- Minimum 30cm resolution
- Accuracy within 73.4cm meeting NSSDA accuracy



LiDAR: Light Detection and Ranging



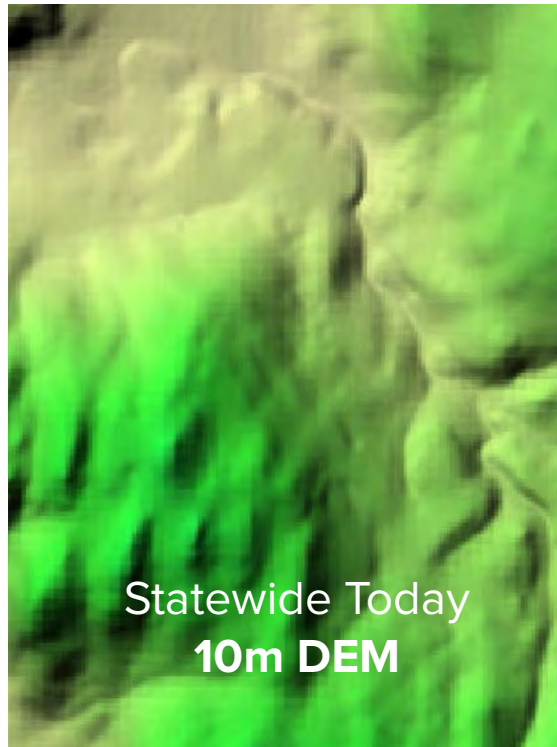


Lidar Derivatives

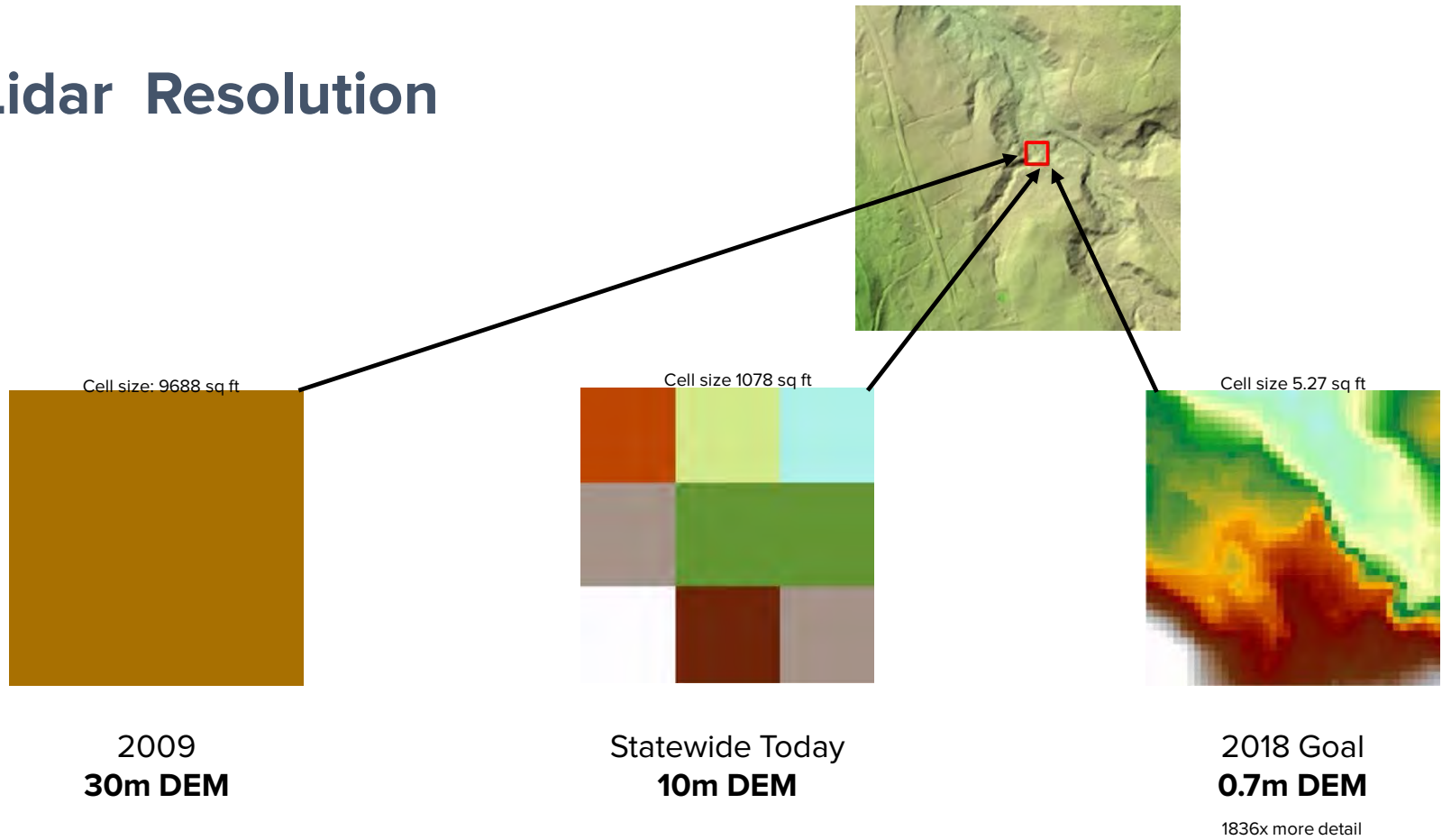
Lidar Resolution

National Elevation Dataset: Reported vertical accuracy= 8 ft.

LIDAR: Vertical accuracy= 3.6 in.

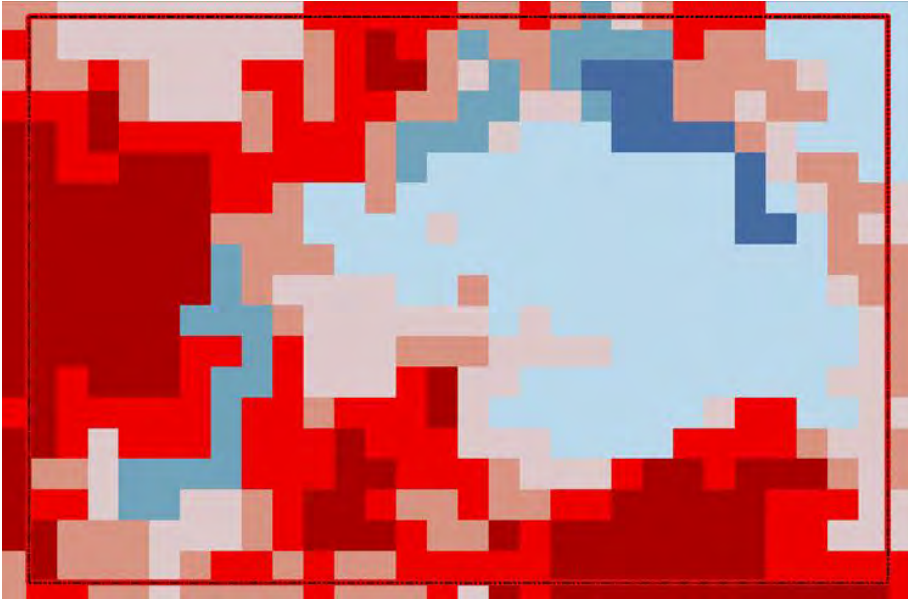


Lidar Resolution

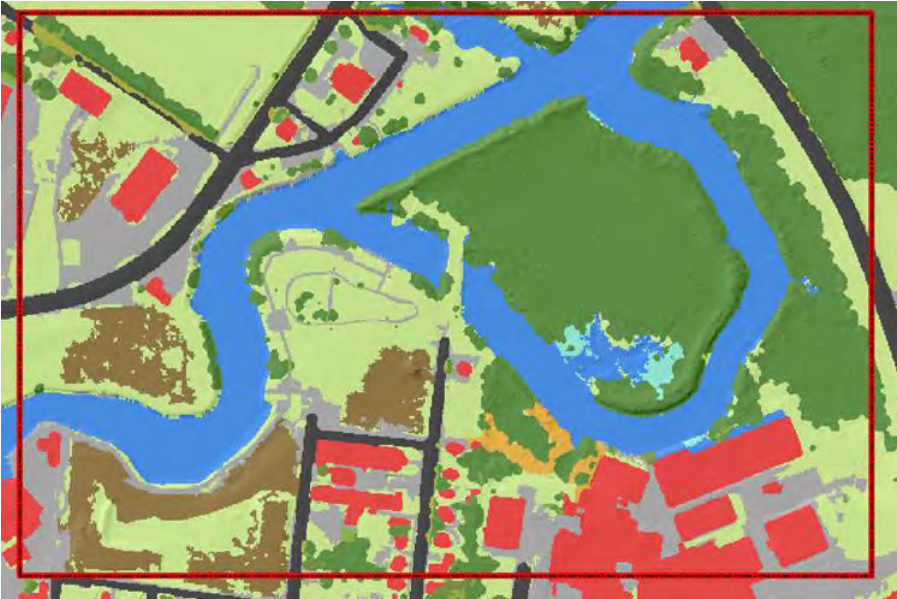


High Resolution Land Cover

30M Resolution Land Cover



1M Resolution Land Cover



UVM SPATIAL ANALYSIS LAB

Flood Mapping



Special Flood Hazard Area delineated with new study using topography from LiDAR


Special Flood Hazard Area on study from 1986

STATE OF VERMONT

Vermont Open Geodata Portal

- DATA
- WEB SERVICES
- APPLICATIONS
- DEVELOPERS
- CONTACT US
- HELP

My Data

 Publisher_VCGI

Search for data



Agriculture



Basemap



Boundaries



Climate



Demographic +
Economic



Elevation



Environment



Geologic + Soils



Health + Public Safety



Imagery





< VT Boundaries - town polygons

Share
Open In ArcGIS

Download Dataset ▾

APIs ▾

Details

Table

Charts

DESCRIPTION

more ▾

The BNDHASH data layer depicts Vermont villages, towns, counties, Regional Planning Commissions (RPC), and LEPC (Local Emergency Planning Committee) boundaries. It is a mosaic of generally 'best available' boundaries from various data sources (refer to ARC_SRC and SRC_NOTES attributes), but DOES NOT

DATASET ATTRIBUTES

AREA
Number

ABOUT

VCGI Open Data

By [Opendata_VCGI](#)

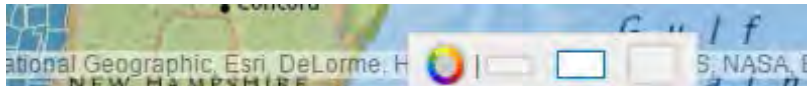
Published: 2012-02-16

Updated: 4 days ago

The VT Center for Geographic Information (VCGI) is pleased to foster open access geospatial data, services, apps, and tools.

Source <http://maps.vcgi.vermont.gov>
Metadata VT Boundaries - town polygons
License VCGI and the State of Vermont





Share Download Dataset APIs

- Full Dataset
- Spreadsheet
- KML
- Shapefile

- Filtered Dataset
- Spreadsheet
- KML
- Shapefile

Additional Resources

Download Pre-Packaged Data

Metadata VT Boundaries - tow
License VCGI and the State of



Share Download Dataset APIs

Full Dataset

GeoJSON

<http://node.geodata.vermont.gov/datasets/0e4a5d2d/>

GeoService

<http://maps.vcgi.vermont.gov/arcgis/rest/services/EGC>

OGC WMS

http://maps.vcgi.vermont.gov/arcgis/services/EGC_ser

Filtered Dataset

GeoJSON

<http://node.geodata.vermont.gov/datasets/0e4a5d2d/>

GeoService

<http://maps.vcgi.vermont.gov/arcgis/rest/services/EGC>

subthemeOther |





Vermont Center for Geographic Information

Learn

Map

Ask

About VCGI

Data and Imagery

Resources

Map Center

Education and Training

Events

A Division of the Agency of Commerce and Community Development

Act 174 – Energy Planning Mapping Standards

Act 174 of 2016 establishes a new set of municipal and regional energy planning standards, which if met allow those plans to carry greater weight - substantial deference - in the Section 248 siting process for energy generation. Links to the data specified in the 'Mapping Standards' are listed below.

For more information about Act 174 and the standards, please visit the Department of Public Service's [web page](#).

Methodology

"[VCGI's Act 174 Energy Planning Mapping Standards: GIS Support Methodology](#)" - Overview of the methodology VCGI utilized to produce the available layers available below. Also contains tables with links to the individual components of the known and possible constraints.

Known Constraints

[ConstraintsKnown_Act174v2.zip](#) – Update to all "Known Constraints" merged into single "flat" ESRI shapefile format.

Possible Constraints

[ConstraintsPossible_Act174v2.zip](#) – Update to all "Possible Constraints" merged into single "flat" ESRI shapefile format.

Raw Renewable Potential:




[EnvironOther_SOLARact174v2.zip](#): Updated statewide ground mount solar potential based on 30m USGS DEM layer created using the ESRI solar analyst. Filtered by SLOPE (LTE 14%), ASPECT (90-270 Degrees) and radiation values GTE 1,000 kWh/Sq. Mtr. "Known constraints" have been removed while "Possible constraints" remain in the data. Attributed with two units of measure; (Wh/m2) and (kWh/m2) and in ESRI shapefile.

[EnvironOther_WINDact174v2.zip](#): Updated statewide 30m, 50m & 70m wind speed layers from the 2004 MA Technology Collaborative effort filtered for minimum wind speed, then merged into single ESRI shapefile. "Known constraints" have been removed while "Possible constraints" remain in the data.


Leslie Pelch
Outreach Coordinator
(802) 882-3002

John E. Adams
Director
(802) 522-0172

1 National Life Dr., Davis
Building, 6th Floor
Montpelier, VT 05620-0501
FAX: (802) 828-3383

Layers    Quick Tools

- Base Maps
- Operational Layers
 - Popular layers
 - Agriculture
 - Boundaries
 - Cadastral
 - Climate
 - Demographic
 - Economic
 - Elevation
 - Emergency
 - Environment
 - Facilities

Layers 

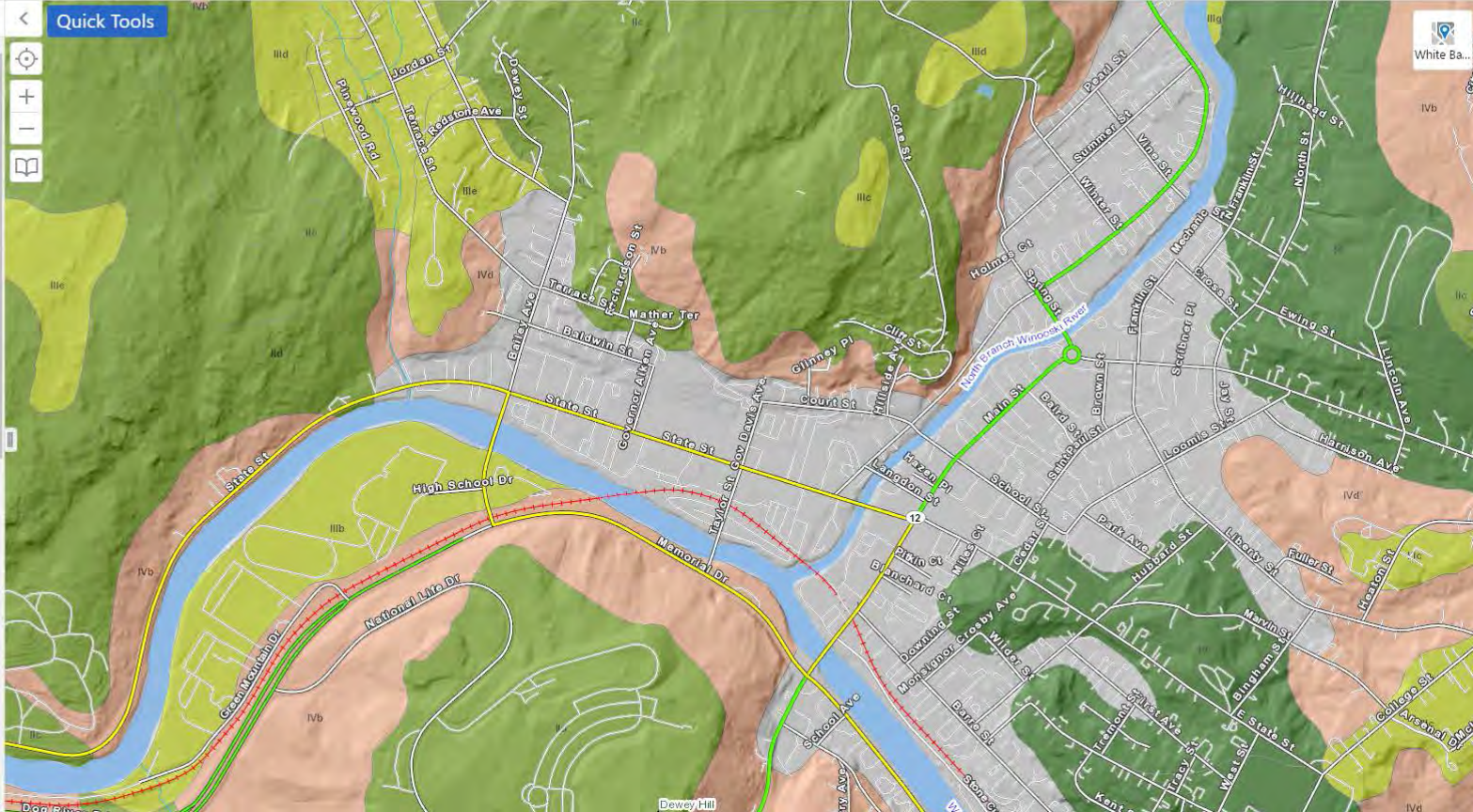


<http://maps.vermont.gov/vcgi/html5viewer/?viewer=vtmapviewer>



Layers

- Base Maps
- Operational Layers
 - Popular layers
 - Buildings and Facilities
 - Parcels
 - Parcels (unofficial data)
 - Parcel data status
 - Contours
 - Deer wintering yards
 - Endangered species
 - Outdoor recreation sites
- Soils
 - Soils - NRCS soil survey
 - Soils - Prime Agriculture
 - Soils - Onsite sewage disp...
 - Class I - WELL SUITED
 - Class II - MODERATELY SUITED
 - Class III - MARGINALLY SUITE--
 - Class IV - NOT SUITED
 - Class V - NOT RATED
 - NULL
- Wetlands



Please indicate the importance of access to VCGI's geospatial information to your organization? (Municipalities & RPCs)

2017 N. 95

